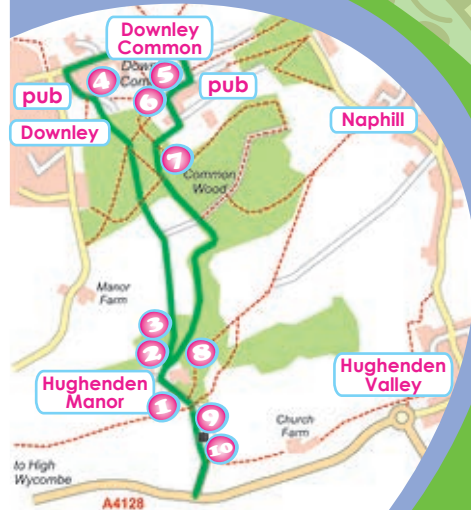


Rusty can beat the brain bug.. can you?

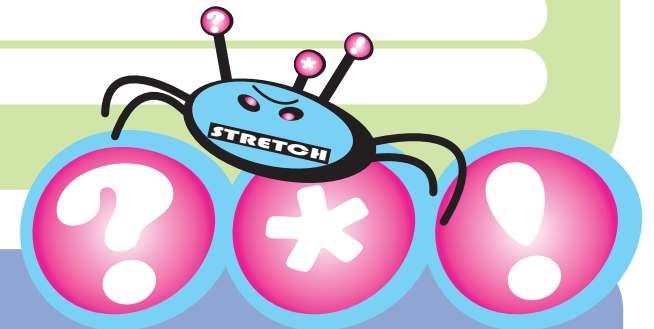
QUESTIONS..

- 1 Look at the sundial near the wall by the stables. What year is on it?
- 2 You follow a bridleway to Downley. What is the difference between a footpath and a bridleway?
- 3 What dates were the following buildings built?
Well Cottage, Wesleyan Chapel and Diamond Cottage.
- 4 On Downley Common there is a bench made of a log. Whose name is on it and what did he do?
- 5 How do they stop people parking on Downley Common?
- 6 Look at the hedge of the house called Woodland View.
What plant is it?
- 7 What is the most common large tree in this wood?
- 8 As you go up the hill, look out for a large hole built into the bank on your left, with bars across it. What is this and what was it used for?
- 9 Why do you think there are fences around some of the trees on the open ground near the church?
- 10 Go into the graveyard and find the grave of Mary Anne and Benjamin Disraeli. When did they die?



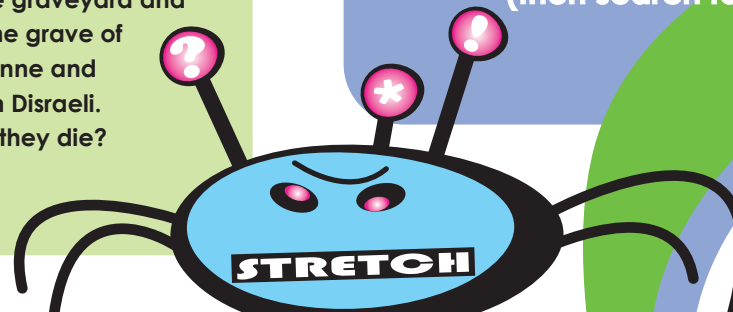
ANSWERS..

- 1
- 2
- 3
- 4
- 5
- 6
- 7
- 8
- 9
- 10



take a **STRETCH** brain bug on your walk and **STRETCH** your brainpower! check your answers at... www.chilternsaonb.org

(then search for... hughenden stile free walk)



brain bug
HUGHENDEN

Hughenden **BRAINBUG** Walk Quiz **ANSWERS**

We hope you enjoyed your walk.....here are the Quiz Answers.....

1. 1749

2. Walkers, horses and bicycles can use bridleways. Only walkers can use footpaths

3. 1813, 1824, 1853

4. John Brandon. He was a woodsman

5. There are logs at the edge

6. The hedge is holly

7. Beech tree

8. A dungeon. It was used to lock people up

9. To protect the bark of the trees so that isn't eaten by animals

10. Mary Anne 15th Dec 1872, Benjamin 19th April 1881

Did you enjoy this walk? If YES then why not try our 4 other Quiz Walks:

- Thames and Chilterns Hambleton walk
- Little Marlow walk
- Missenden stile free walk
- Views of the Thames Goring walk